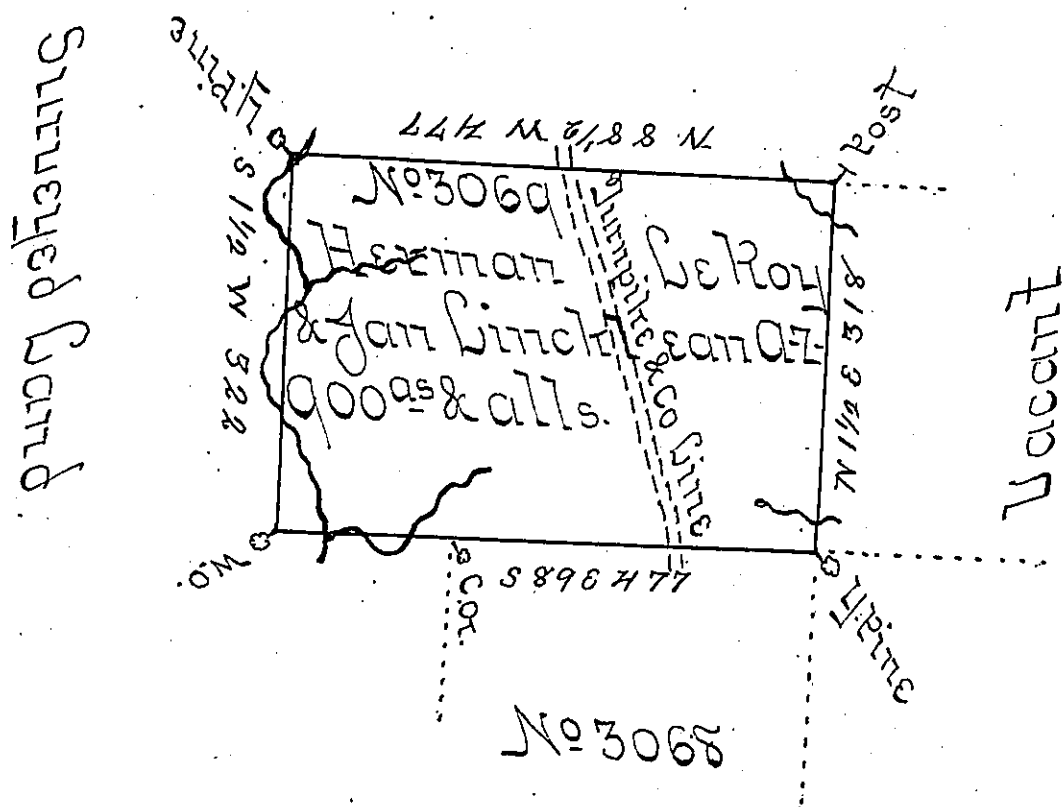


Wilhem Willink
& others No 2730



Surveyed to Herman Le Roy & Jan Link learn A.Z. on
 the 12th of December 1844 by virtue of their Warrant
 No 3069 dated the 13th of December 1792 containing
 Nine hundred Acres with Allowance of six per Cent
 um for Roads & that part on the West side of the
 Turnpike is situate in Colebrook Township Clin-
 ton County on the Waters of Hymers Run, that
 on the East in Brown Township Wyoming County
 on the Waters of Trout Run a branch of Pine Creek

CHAS. HENRY D.S. of Wyoming Co.
 B.W. Morrison D.S.

To Jacob Sallade Esquire } of Clinton County
 Surveyor General }

IN TESTIMONY that the above is a copy of the original remaining on file in
 the Department of Internal Affairs of Pennsylvania, made
 conformably to an Act of Assembly approved the 16th day of
 February, 1833, I have hereunto set my Hand and caused
 the Seal of said Department to be affixed at Harrisburg,
 this — second — day of — December — 1902.

James W. Latta
 Secretary of Internal Affairs.